

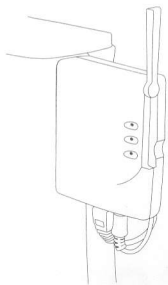
INSTRUCTION MANUAL

for

**MAX WIRELESS
ADAPTER™**

FOR XBOX 360™

WiFi Bridge for Xbox 360



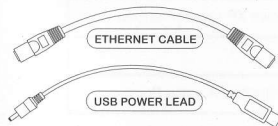
Index

1. Getting Started
2. Introduction
3. System Requirements
4. Existing Network Set-Up
5. Configure your WiFi Bridge Using your PC – Step by Step
6. Connect your *WiFi MAX Bridge* to your Xbox 360
7. Configure and Test the Internet Connection on your Xbox 360
8. Additional Functionality
9. Troubleshooting
10. Technical Support

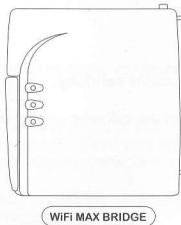
1. Getting Started

Pack Contents

Before getting started, please check that all parts are present. If anything is missing, please contact customer services (see end of manual).



- 1 x WiFi MAX Bridge Adapter
- 1 x 20cm Ethernet Cable
- 1 x 20cm USB Power Cable
- 1 x User Manual



2. Introduction

Congratulations on your purchase of Datal's *WiFi MAX Bridge* for Xbox 360.

In conjunction with your existing wireless router and broadband Internet connection, *WiFi MAX Bridge* will enable you to connect your Xbox 360 wirelessly to the Internet to enjoy online gaming and content through Xbox Live™.

WiFi MAX Bridge is specifically designed to neatly attach to the back of your Xbox 360, and includes a matching USB power connector that draws power from your console, eliminating the need for an additional power supply.

3. System Requirements

In order to use *WiFi MAX Bridge*, you need the following computer and network set-up:

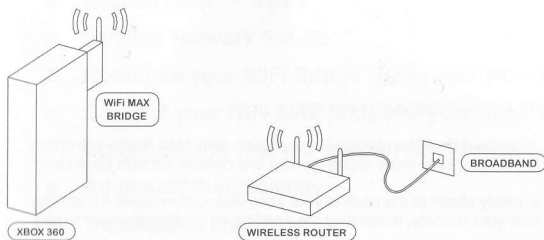
MINIMUM SYSTEM REQUIREMENTS	
Computer / Processor	Personal computer with RJ45 compatible network card (NIC)
Operating System	Windows 98, 2000, ME, XP. Windows XP recommended.
Internet Connection	ADSL or DSL (cable) Broadband
Wireless	802.11B or 802.11G-compatible Wireless Access Point

4. Existing Network Set-Up

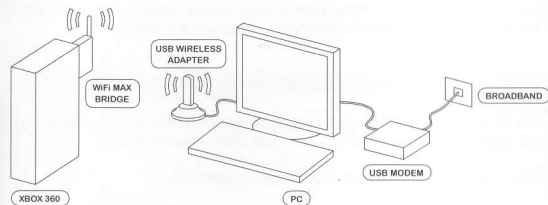
For successful operation, please follow these installation and configuration instructions **carefully**.

You can use *WiFi MAX Bridge* to connect your Xbox 360 to the Internet in either of the following configurations:

Configuration 1. Using a Wireless Router



Using a USB Modem & USB Wireless Adapter



In either case, to correctly configure your *WiFi MAX Bridge*, you need to know the following details about your existing network:

- Do you have ADSL or DSL (cable) Broadband?
- The name (SSID) of your wireless network
- Is your wireless network encrypted? – If so you will need the Key.

If you need to, access the configuration utility of your wireless router or adapter to find these settings **before continuing**.

5. Configure your WiFi Bridge Using your PC – Step by Step

Before getting started, ensure you've noted down your existing wireless network settings (see above), and that your existing wireless network is up and running.

If you're using a USB modem and USB wireless adapter, ensure your PC is switched on and that you're using your USB wireless adapter in Access Point (Infrastructure) mode.

Connect the WiFi MAX Bridge to your PC's network card

Use the supplied Ethernet cable to connect your PC's network card to the Ethernet port on your *WiFi MAX Bridge*. Next, connect the USB power lead between your PC and the *WiFi MAX Bridge*.

Change the IP address used by your network card

Windows XP (other versions of Windows vary slightly)

Click 'Start', then 'Control Panel', then 'Network Connections'. Under 'LAN of High-Speed Internet', you should see your computer's network card listed (probably as 'Local Area Connection'). Right-click it and choose 'Properties'.

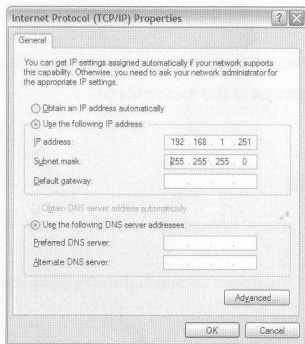
In the list of items used by the connection, click on 'Internet Protocol (TCP/IP)' and then click 'Properties'.

Your computer is likely to be set to obtain its IP address and DNS server address automatically. If not, then **write down** the IP address, Subnet mask, Default gateway and Preferred and Alternate DNS server's details.

Now, set the network card to 'Use the following IP address:' and enter the following details:

IP address: 192.168.1.251
Subnet mask: 255.255.255.0
(default gateway is not required)

The completed dialogue should look like:

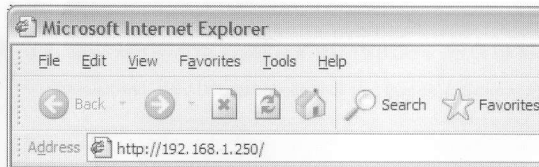


Click 'OK' to apply the settings and 'OK' again to close the 'Local Area Connection Properties' dialogue.

Access the configuration utility

Open your web browser (Internet Explorer / Firefox etc) and enter the following IP address into the address bar:

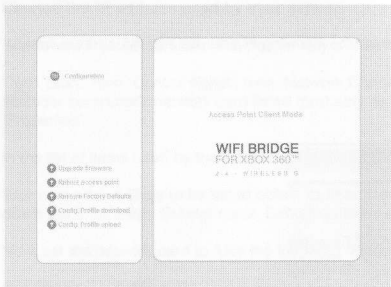
http://192.168.1.250



You will then be asked for your User name and Password. Leave the User name blank and enter 'admin' into the password field. These defaults can be changed later to improve security.



When you access the WiFi MAX Bridge configuration utility, you should see the following start page:

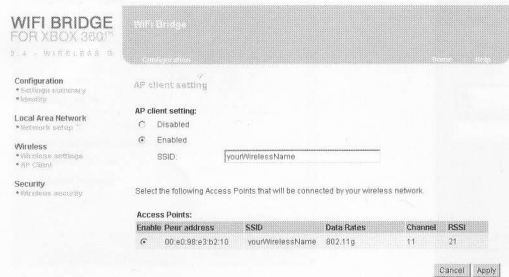


Click on the 'Configuration' option at the top of the left menu.

Choose your wireless network

When the configuration menu loads, click on AP Client in the left menu, after a few seconds of scanning, WiFi MAX Bridge should detect your wireless network. All wireless networks within range will be listed.

Use the radio button to select your chosen wireless network and then click 'Apply'



Configure for ADSL / DSL

Next, click on 'Wireless Settings' on the left menu. The SSID should be the name of the wireless network you selected in Step 4.

Station Mode, Operation Mode and Preamble Type can be left at their defaults of 'Auto', 'Infrastructure' and 'Long' respectively.

IMPORTANT:

If your broadband is of DSL (cable) type, then MAC Clone can be left as 'Disabled'.

If your broadband is of ADSL (telephone line) type then MAC Clone **MUST** be set to 'Enabled'.



Configure for your security settings

If you have wireless security (WEP or WPA) enabled on your wireless network, click the 'Wireless Security' tab on the left menu and then follow the link for the type of security you have.

Select the relevant WEP Key type (64 or 128 bit) or WPA Password and apply the changes.

Reset your network card settings

You have now completed configuring your WiFi MAX Bridge! You can return your PC's network card IP address to its original settings.

To do this, follow the instructions from Step 2 to access the TCP/IP Properties for your network adapter.

Return the IP address, Subnet mask, Default Gateway and Preferred and Alternate DSN details to their original settings. In most cases these would have been 'Obtain IP address automatically' and 'Obtain DNS server address automatically'.

6. Connect your WiFi MAX Bridge to your Xbox 360

Now that you have configured your *WiFi MAX Bridge* with your wireless network settings you are ready to connect it to your Xbox 360.

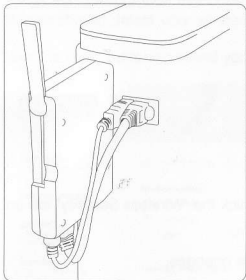
WiFi MAX Bridge is designed to attach neatly to the back of your Xbox 360 console as follows:

Connect the USB power lead to the *WiFi MAX Bridge* unit.

Connect one end of the Ethernet cable to the *WiFi MAX Bridge* unit.

Attach the *WiFi MAX Bridge* unit to the two locating holes on the back of your Xbox 360 console.

Finally, attach the other ends of the USB and Ethernet cable to the connectors on the back of your Xbox 360 console.



7. Configure and Test the Internet Connection on your Xbox 360

When your Xbox 360 console is switched on, you should see all three lights on the *WiFi MAX Bridge* illuminated.

For standard network configurations, the Xbox 360's default settings of 'Obtain IP address automatically' and 'Obtain DNS address automatically' will be sufficient.

To test your new wireless Internet connection, follow these steps:

In the Xbox 360 dashboard navigate right to the 'System' blade.

Navigate down to 'Network Settings' and press 'A'.

Choose 'Test Xbox Live Connection' and press 'A'.

Your Xbox 360 will now test the Internet connection. Your adapter will be reported as 'Wired' if it is connected properly, and you should see the remaining tests passed sequentially. If the test reports 'Xbox Live: Connected', you have successfully configured your *WiFi MAX Bridge*. You can now use your Xbox 360 online wirelessly!

8. Additional Functionality

Hardware reset

You can reset the *WiFi MAX Bridge* back to its factory default settings (all your settings will be lost) by using a sharp object such as a paper clip to press and hold the small reset button on the unit for a full ten seconds before releasing. The unit must be powered up to perform the hardware reset.

9. Troubleshooting

If you're having trouble connecting your Xbox 360 to your wireless network using *WiFi MAX Bridge*, first ensure that you have read, understood and followed the configuration instructions detailed in the manual. Configuration methods for this WiFi bridge will differ from other devices, and must be followed exactly.

If you have followed the instructions and are still having trouble, follow our troubleshooting tips:

I get the message 'Error obtaining IP address' from my Xbox 360 when I try to connect.

This is the most common error message, and is received when your Xbox 360 cannot connect to your wireless network. This is because obtaining an IP address from a DHCP server (which will be your wireless router in Configuration 1 or your PC in Configuration 2, See Section 4) is the first step in connecting to your network.

There may be a number of reasons for this, the most likely being:

Your wireless network is out of range.

Try moving your Xbox closer to your wireless access point and trying again. If this solves the problem, you may need to try repositioning your wireless router or wireless adapter.

You have not Enabled MAC Address Cloning and you have ADSL broadband.

If your broadband is of the ADSL type (carried over a normal phone line) then you need to enable MAC Address Cloning. See Section 5.5)

You have not configured the WiFi MAX Bridge to connect to your wireless network correctly.

Connect your WiFi MAX Bridge to your PC again (see Section 5), access the configuration utility, click 'Configure' and then 'AP Client'. AP Client MUST be set to enabled and your wireless network's name must be listed alongside 'SSID'.

Your network is not configured to dynamically allocate IP addresses.

This manual assumes that your network is configured to dynamically allocate IP addresses to network devices (this is DHCP serving). If your network is not configured in this way then you will need to configure your Xbox 360 and WiFi MAX Bridge accordingly. These settings are available through the configuration utility.

I cannot access the configuration utility

If you are unable to access the configuration utility, ensure that you have followed the instructions for changing your network card's IP address described in Section 5.2.

If you are confident that you have done this successfully and you still cannot the most likely reasons are:

You may need to set your web browser to not try to dial a connection. In Internet Explorer, follow these steps:

1. On the menu, click 'Tools'
2. Choose 'Internet Options', then 'Connections'
3. In 'Dial-up and Virtual Network settings' ensure that 'Never dial a connection' is selected.

You may be changing the TCP/IP settings for the wrong network device

Some PCs have more than one network card. Many will have FireWire (1394) cards, which will be listed alongside your network card. Ensure that when you follow the instructions in Section 5.2 for changing your TCP/IP settings that you are changing the settings for the network card that you are connecting the WiFi MAX Bridge to.

To help identify the correct network card; in Windows XP's 'Network Connections' screen when you connect the WiFi MAX Bridge to your PC you should see the 'Status' next to the entry for your network card change to 'Connected' or 'Acquiring network address'. It should change to 'Not connected' when you unplug the WiFi MAX Bridge.

No wireless networks are listed in the AP Client section of the configuration utility

If your wireless network is not visible in the AP Client section, it may be due to one of the following reasons:

Your SSID is not being broadcast

Ensure that your access point (wireless router or USB wireless adapter) is set to broadcast its SSID, otherwise you will not see it listed by the WiFi MAX Bridge configuration utility.

Your router may not be enabled for wireless access

If you are not using your routers' wireless networking capabilities for any other devices already, you may need to enable its wireless capabilities; consult the documentation that came with your router.

How do I restore to factory defaults?

Follow the instructions in Section 8 to restore your WiFi MAX Bridge to its factory defaults.

10. Technical Support

If you are experiencing difficulties with any aspect of your WiFi MAX Bridge for Xbox 360, please ensure you have read and understood the contents of this user manual before contacting Datel's Technical Support department.

Contact Details - UK:

Telephone 0906 550 1236 Calls to this line are charged at £1 per minute at all times.
Lines are open 8am - 7pm Monday to Friday, 9am - 3pm Saturday, excluding national and bank holidays. You must be aged 18 or over and have the permission of the person who pays your telephone bill. This service is available to UK residents only.

Web site www.codejunkies.com

Email support@datel.co.uk

By post Customer Services Department,
Datel Ltd, Stafford Road, Stone, Staffordshire ST15 0DG.

Contact Details – For Customers in the United States

Phone (727) 431-0650

E-Mail support@dateldesign.com

Web Site www.codejunkies.com

Mailing Address

Datel Design & Development, Inc.
ATTN: CUSTOMER SERVICE,
15500 Lightwave Drive, Clearwater, FL 33760

WARRANTY INFORMATION (USA ONLY)

To obtain warranty service within the warranty period:

Return product to the place of purchase or send the defective item postage prepaid with a copy of the sales receipt, return address and a brief description of the problems you are experiencing to:

Datel Design & Development, Inc. 15500 Lightwave Drive, Clearwater, FL 33760
Attn: Consumer Services