

USER MANUAL

XSATA for Xbox 360

Index

1. Introduction
2. Getting Started
 - 2.a. Pack Contents
 - 2.b. System requirements
 - 2.c. Connecting XSATA to your PC
3. Accessing files on your Xbox 360 hard drive
4. Technical Support

1. Introduction

Congratulations on your purchase of Datel's XSATA for Xbox 360. XSATA is a hardware docking solution that allows you to connect your PC to your Xbox 360's hard drive without the need for any hardware modifications to your hard drive or Xbox 360.

Once your Xbox 360's hard drive is connected to your PC you can use software like Xplorer 360 from the team at www.360gamesaves.com to access the previously unavailable content on your hard drive at file level.

XSATA connects permanently to your Xbox 360 (though can be removed) and includes a USB port and cable meaning you can swap between connecting to your hard drive via PC or Xbox 360 by simply unplugging a cable.

2. Getting Started

2.a. Pack Contents

Before getting started, please check that all parts are present. If anything is missing, please contact customer services (see end of manual).

- 1 x XSATA docking unit
- 1 x High speed USB 2.0 cable
- 1 x User manual

2.b. System requirements

In order to use *XSATA for Xbox 360*, you need the following computer and console set-up:

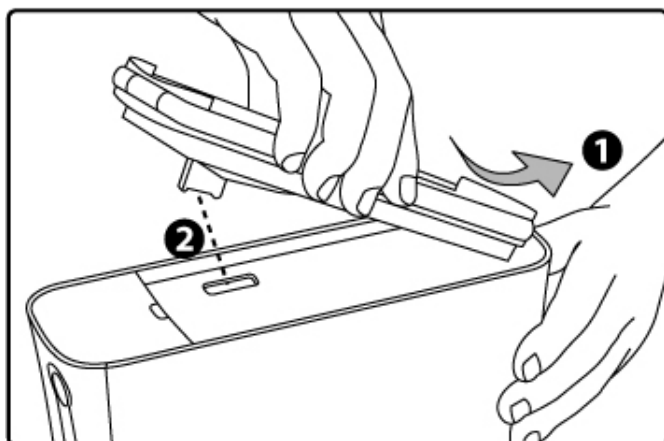
MINIMUM SYSTEM REQUIREMENTS	
-----------------------------	--

Computer /	Personal computer with one free USB port (USB 2.0
------------	---

Processor	recommended for high speed data transfer)
Operating System	Windows 98, 2000, ME, XP. Windows XP recommended.
Console	Xbox 360 with official Xbox 360 hard drive

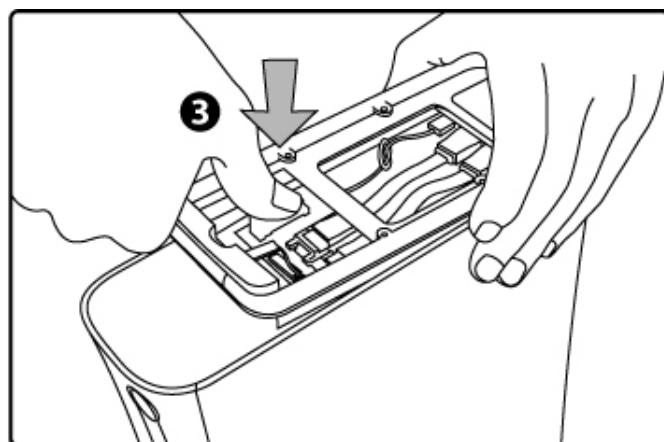
2.b. Connecting XSATA to your Xbox 360 and your Hard Drive

Before connecting XSATA to your Xbox 360, first detach your official Xbox 360 hard drive from your console by pressing the release catch and lifting the drive away.

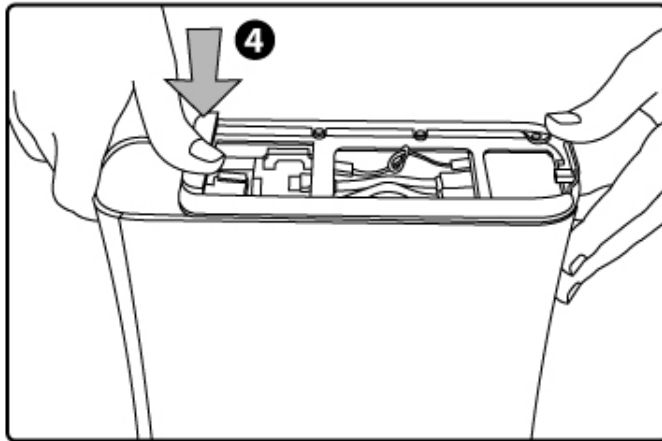


1. Take the XSATA dock unit and orientate it by ensuring that the protruding connector (2) is aligned above the hard drive connector slot on your Xbox 360. Engage the leading edge of the XSATA dock with the back of your Xbox 360 (1).

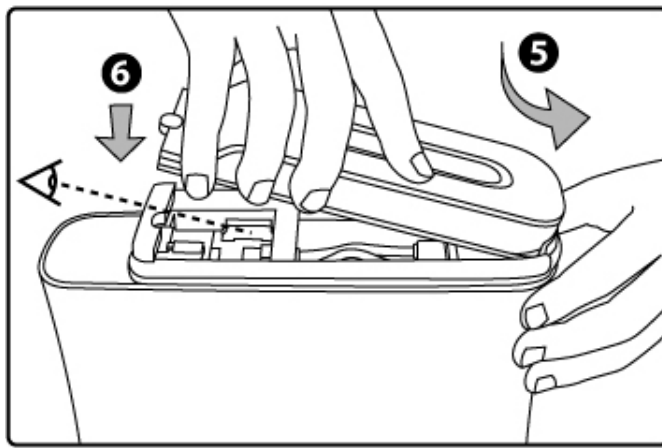
2. Lower the XSATA ensuring that the connector stays aligned with the socket on the 360 (2).



3. Before attaching the other side of the XSATA unit, press down the connector into the socket on the 360 so that engages positively.



4. Now push down the front edge of the XSATA unit firmly so that it sits flush with the top of the 360.



5. Attach your official Xbox 360 hard drive by slotting in the back edge of the drive first (as you would when attaching it to the 360 itself). As you lower the drive pay attention to the connector on the hard drive and ensure it aligns and connects with the socket on the XSATA

6. Finally, click the front edge of the hard drive into the XSATA dock.

2.c. Connecting XSATA to your PC

Use the supplied USB 2.0 lead to connect the XSATA unit to your PC using the mini-USB port at the back of the unit.

Arbitration on boot sequence

When XSATA is connected to your PC, both your PC and Xbox 360 are physically connected to your Xbox 360 hard drive at the same time. Because of this you need to use the correct boot sequence to dictate whether the PC or the Xbox 360 is in control of the hard drive.

Boot with USB connected (recommended)

The PC will be in control, files on the hard drive will be available using software like Xplorer 360. The hard drive will not be available to the Xbox 360.

Removing the USB lead whilst powered up will re-boot your Xbox 360 and make the hard drive available to the Xbox 360.

Boot with no USB connected

The Xbox 360 will be in control. Obviously the PC will not be able to access the hard drive.

Warning: If you connect the USB cable at this point, neither the Xbox 360 or your PC will be able to access the hard drive. Reboot your Xbox 360 to make the drive available on your PC.

3. Accessing files on your Xbox 360 hard drive

To access files stored on your Xbox 360's hard drive, Datel recommend the Xplorer360 software from the team at www.360gamesaves.com



WARNING – POTENTIAL TO DAMAGE / LOSE DATA

By accessing your Xbox 360's hard drive contents at file level, you are bypassing the safeguards that the Xbox 360 has in place to prevent you from damaging or corrupting either files or the entire file system on the drive.

Before undertaking any modifications to files, or file structure whatsoever, we strongly recommend backing up your entire Xbox 360 hard drive to your PC using a program like Xplorer360 first.

Datel cannot be held responsible for any loss or corruption of data caused by modifications you have made to files or the file system on your Xbox 360 hard drive.

Make sure you read and understand all instructions and warnings relating to the file management software you are using before making any changes.

Once you have connected your XSATA to your PC, switch on your console; you will see the XSATA unit illuminated.

Install and run the software you would like to use to access the content on your hard drive. At the time of writing, you can download Xplorer360 from those nice folks at www.360gamesaves.com for free.

When you run the software, choose "Drive" then "Open Drive or Memcard" (or similar). You should then be able to browse your Xbox 360's hard drive.

For more specific information on adding downloaded gamesaves to your drive and other content (such as gamesaves from the original Xbox), check out the instructions and forums relating to the program you are using.

4. Technical Support

If you are experiencing difficulties with any aspect of your *XSATA for Xbox 360*, please ensure you have read and understood the contents of this user manual before contacting Datel's Technical Support department.

DATEL CUSTOMER SERVICES EUROPE:

Customers Services,
Datel Ltd,
Stafford Road,
Stone,
STAFFS
ST15 0DG
UNITED KINGDOM

Email: support@datel.co.uk
Web: www.codejunkies.com

DATEL CUSTOMER SERVICES USA:

ATTN: Customer Services,
Datel Design & Development Inc,
33 North Garden Avenue,
Suite 900, Clearwater, FL 33755

Email: support@datel.design.com
Customer service knowledgebase: www.datelcustomerservice.com
Main website: www.codejunkies.com

©2006 Datel Design and Development Ltd. *XSATA for Xbox 360* is a trademark of Datel Design & Development Ltd. Xbox 360 and Xbox Live are a registered trademarks of Microsoft Corporation in the US and/or other countries.

This product is not sponsored, endorsed or approved by Microsoft.